



Technical report 18th December 2025

# Status of mobility of livestock in Kenya and Ethiopia: Mapping of livestock routes and case studies on mobility blockages

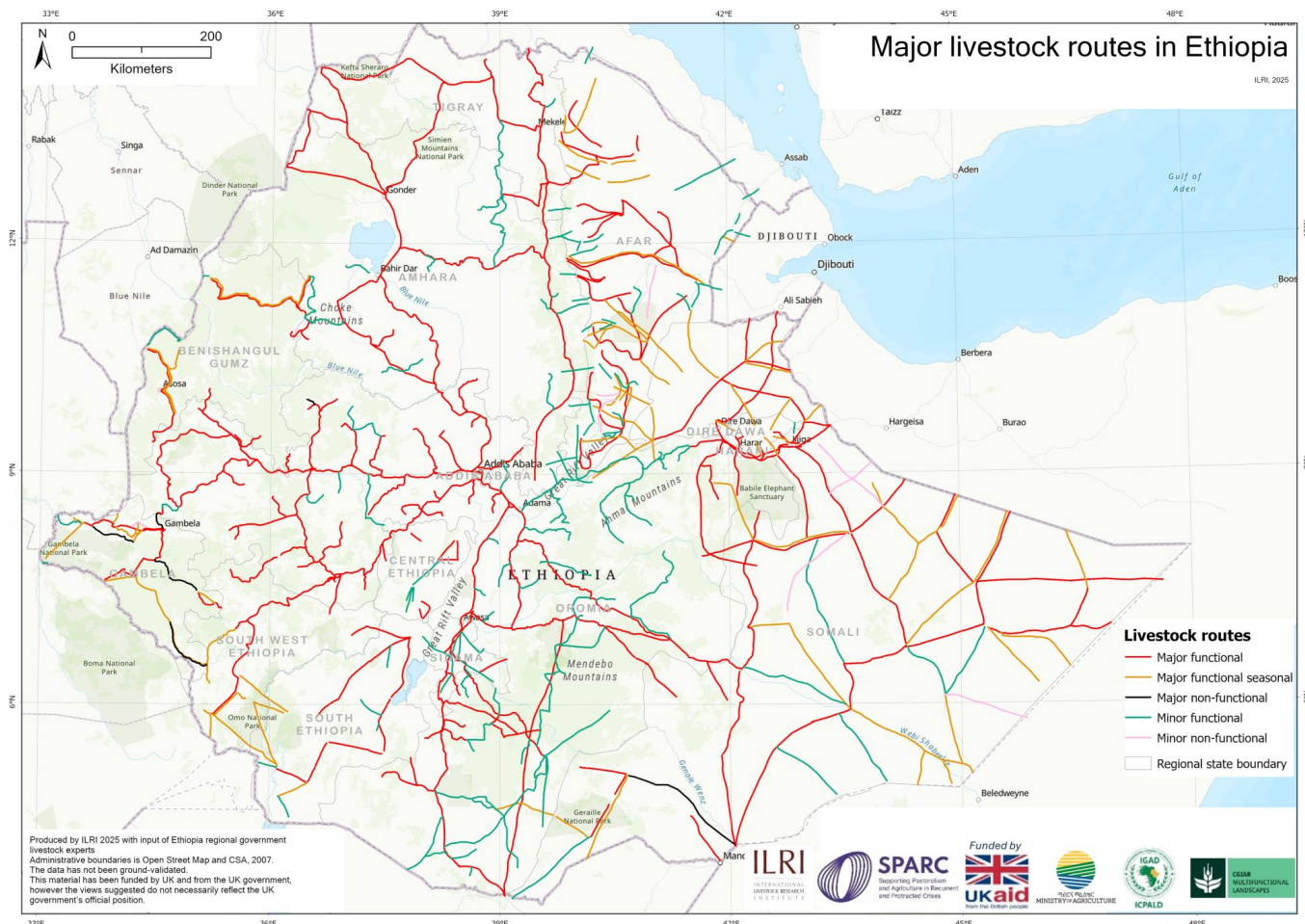
This report assesses the status of livestock mobility, arterial routes, infrastructure and services in Ethiopia and Kenya. It sets out recommendations to preserve these vital dryland arteries.

Publisher SPARC

By { "@context": "https://schema.org", "author": { "@context": "https://schema.org", "@type": "Person", "name": "Mohammed Said", "url": "https://www.sparc-knowledge.org/about-us/contributors/authors/mohammed-said" } }  
[Mohammed Said](#) { "@context": "https://schema.org", "author": { "@context": "https://schema.org", "@type": "Person", "name": "Bedasa Eba", "url": "https://www.sparc-knowledge.org/about-us/contributors/authors/bedasa-eba" } } [Bedasa Eba](#) { "@context": "https://schema.org", "author": { "@context": "https://schema.org", "@type": "Person", "name": "Irene Nganga", "url": "https://www.sparc-knowledge.org/about-us/contributors/authors/irene-nganga" } } [Irene Nganga](#) { "@context": "https://schema.org", "author": { "@context": "https://schema.org", "@type": "Person", "name": "Yasin Getahun", "url": "https://www.sparc-knowledge.org/about-us/contributors/authors/yasin-getahun" } } [Yasin Getahun](#) { "@context": "https://schema.org", "author": { "@context": "https://schema.org", "@type": "Person", "name": "Julius Muyizzi", "url": "https://www.sparc-knowledge.org/about-us/contributors/authors/julius-muyizzi" } } [Julius Muyizzi](#) { "@context": "https://schema.org", "author": { "@context": "https://schema.org", "@type": "Person", "name": "Fiona Flintan", "url": "https://www.sparc-knowledge.org/about-us/contributors/authors/fiona-flintan" } } [Fiona Flintan](#)  
[Supporting livelihoods and markets](#) [Understanding land and conflict](#) [Working in a changing climate](#) [Gender equality and social inclusion](#) [Africa](#) [Ethiopia](#) [Kenya](#)

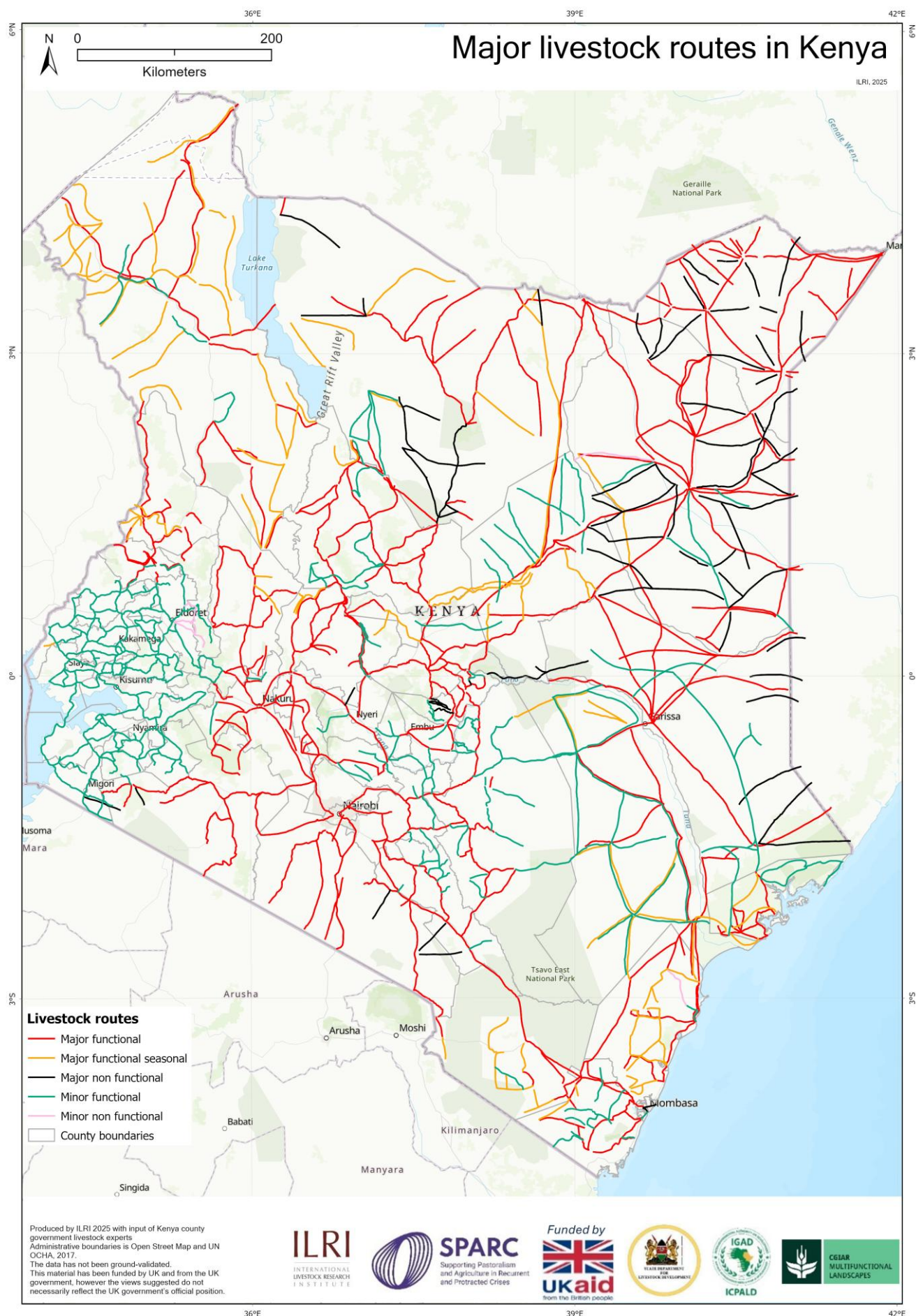
Livestock in the Horn of Africa plays a critical role in economies, food security, employment, and income generation, particularly in pastoral areas. However, livestock mobility is increasingly being restricted, compromising livestock production. Maps and data on livestock routes, infrastructure and services are scattered.

In this report, we assess the status of livestock mobility, arterial routes, infrastructure and services in Ethiopia and Kenya. Livestock routes were mapped by government experts from each country on topographical maps and later digitised. Blocked routes were noted, and case studies selected for follow-up local-level qualitative research on causes of these blockages.



Major livestock routes in Ethiopia - ILRI 2025





Major livestock routes in Kenya - ILRI 2025



## Findings:

- Mapping identified approximately 25,500 kilometers of arterial livestock routes across Ethiopia and 31,597 kilometers in Kenya in both pastoral lowlands and mixed crop-livestock highlands.
- Seven routes in Ethiopia and 76 routes in Kenya are no longer functional owing to land conversion for crop farming, urban expansion, the spread of invasive species (particularly *Prosopis juliflora*), increasing conflict and infrastructural development.
- Facilities to support livestock mobility, such as veterinary posts, abattoirs, holding grounds and loading ramps are sparsely distributed particularly in pastoral areas.

## Policy implications:

- To preserve these vital corridors, governments should set policies that recognise and legally protect livestock routes, and invest in veterinary services, abattoirs, holding grounds and loading ramps.
- Cross-sector collaboration, including land development, livestock and water ministries and experts working together, along with regional policy harmonisation on supporting mobility would also help.



Cows in Omo Valley riverbed, Ethiopia - Image by Appleslerp - CC BY-SA 4.0 - Wikicommons images

---

## Source URL:

<https://www.sparc-knowledge.org/publications-resources/status-mobility-livestock-kenya-et-hiopia-mapping-routes-mobility-technical-report>